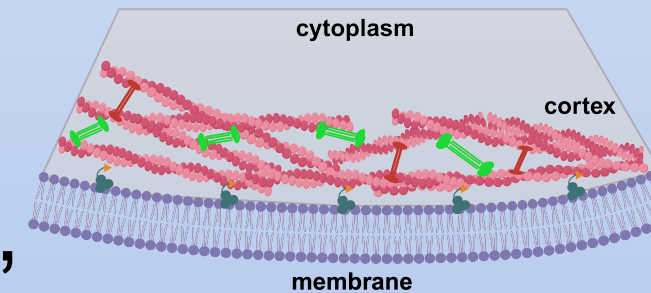


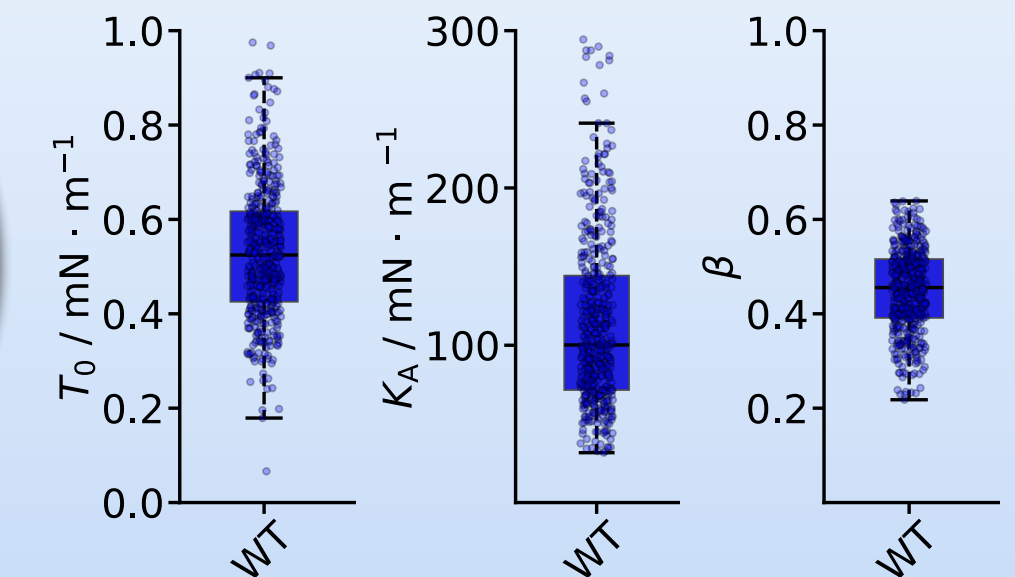
## Overarching research question:

Does mechanical polarity exist in epithelial cells and if so, how does it arise and depend on functional cell-cell contacts?

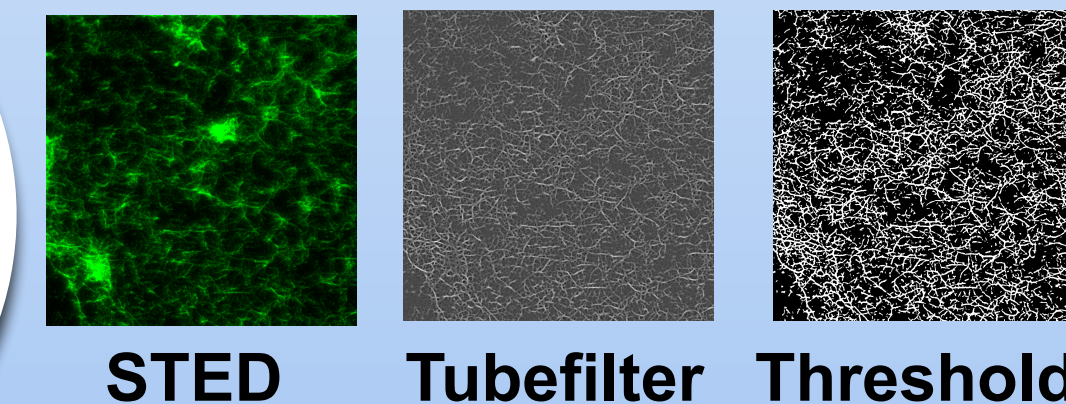
- Developing new experimental strategies to characterize apical and basolateral membrane mechanics
- Combining experimental and theoretical approaches to link mechanics with cortical architecture



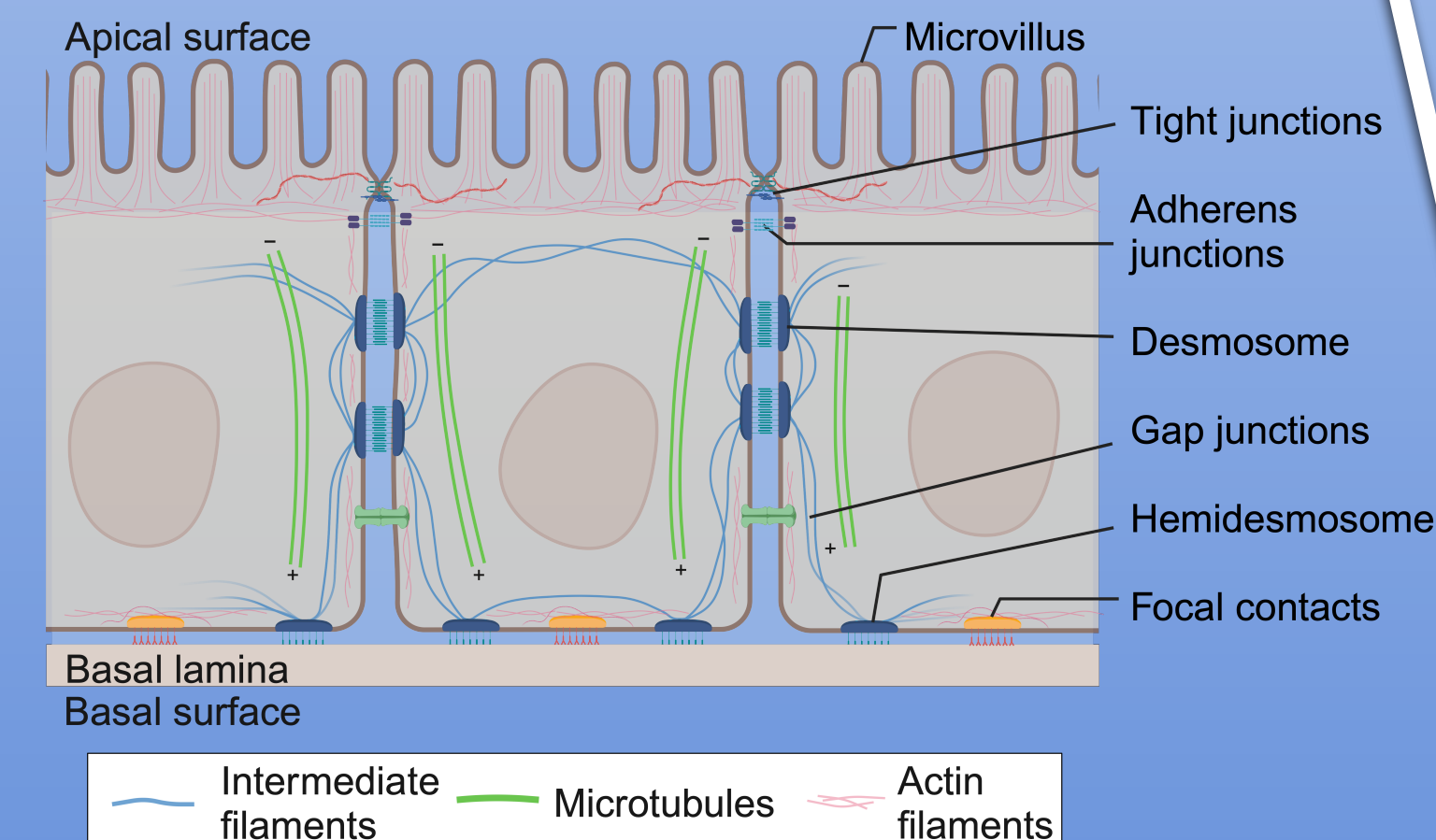
## Atomic Force Microscopy



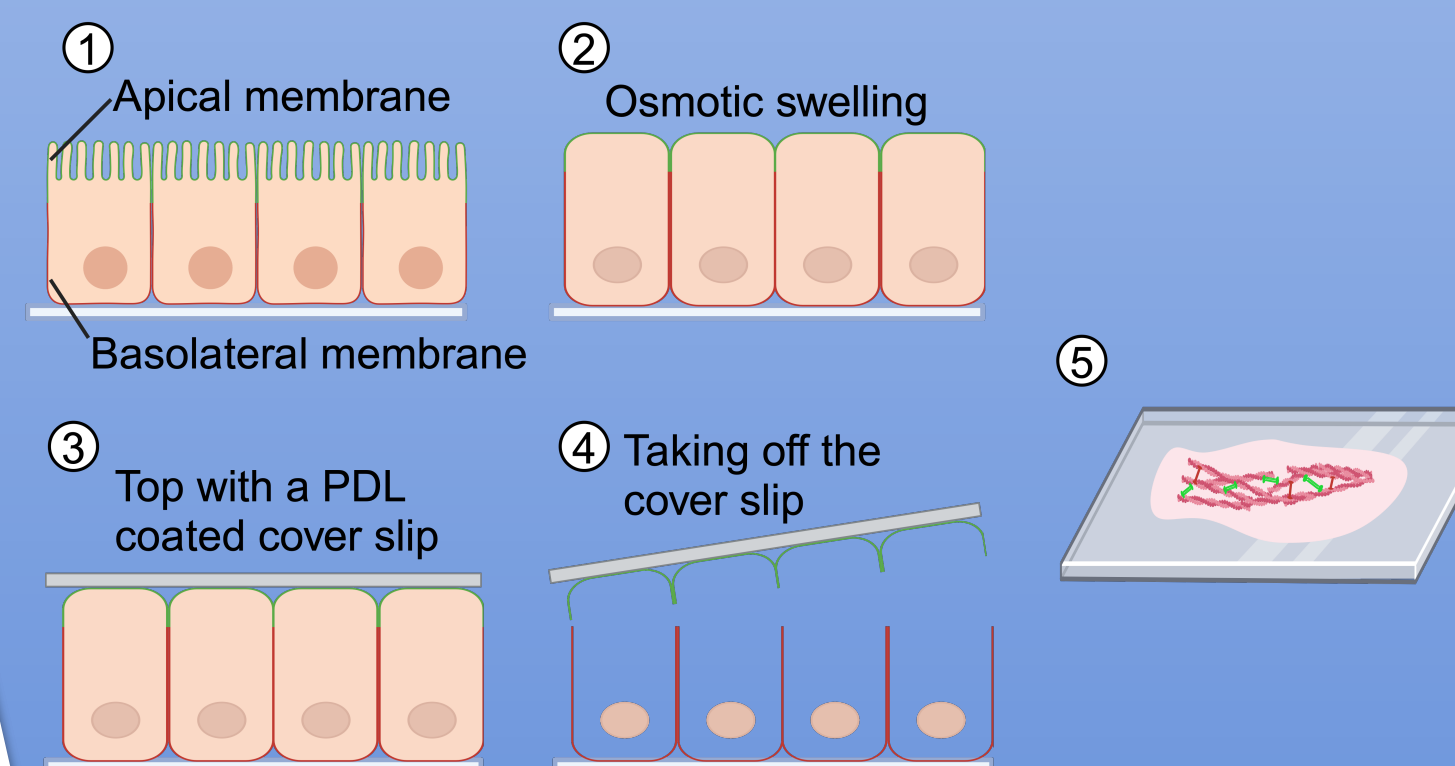
## Image Analysis



## Whole-cells experiments



## Isolated cell cortices



## Inverted Cell Culture

